



2N[®] Access Unit Bluetooth



ACCESS CONTROL

www.2n.cz



IK8



IP54

VERTICALS



Office



Residential



Industry



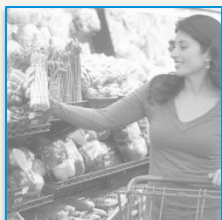
Education



Transportation



Government



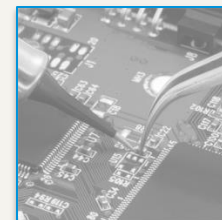
Retail



Leisure &
entertainment



Healthcare



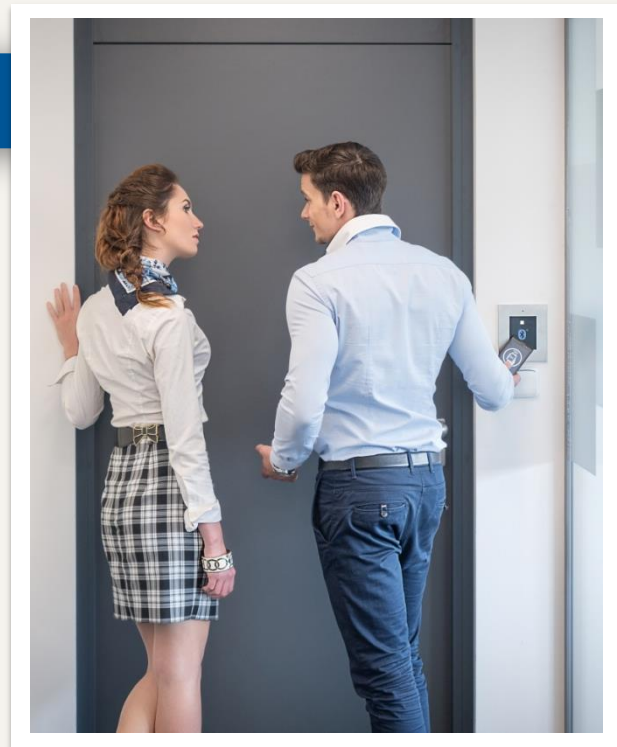
OEM

Configurable distances and modes

- Right combination of different communication distances with selected access modes ensures that only a right person will always be able to open a door

Communication ranges: short (turnstiles), middle (offices), long (parking lots, gates)

Access modes: Tap in app mode that can be combined with double identification





Security makes differences

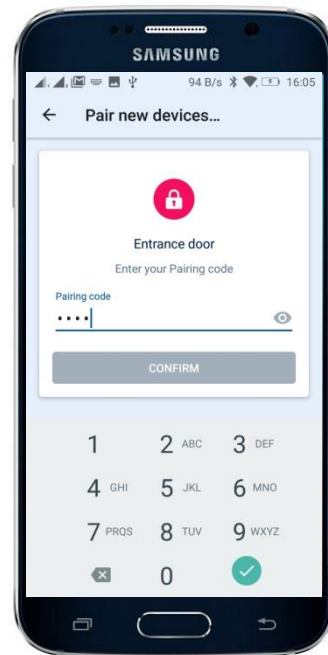
- Thanks to **Bluetooth v4** and **encrypted communication** between Bluetooth module and 2N® Mobile Key app it's ensured that nobody will hack the communication and misuse your credentials.

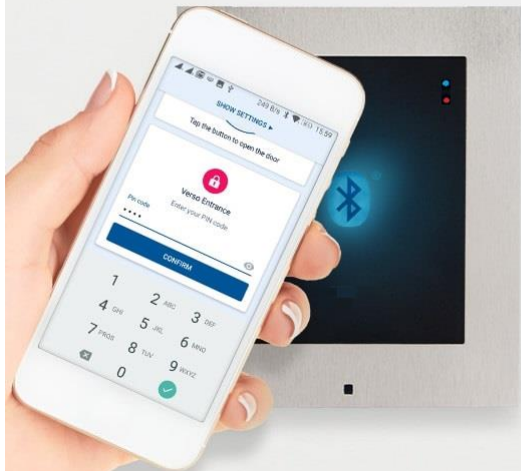
It is not only about SW security where we offer also **802.1X authentication**, but also about HW security – therefore the unit is equipped with **tamper switch**.

Simple pairing process

- Pair your smartphone with 2N® Access Unit Bluetooth in three simple steps:
- Download 2N® Mobile Key app to your smartphone (Google Play or AppStore)
 - Ask the administrator for pairing PIN code
 - Get closer to 2N® Access Unit Bluetooth and enter pairing code into the app

Use 2N® Access Commander to pair with more units from one place





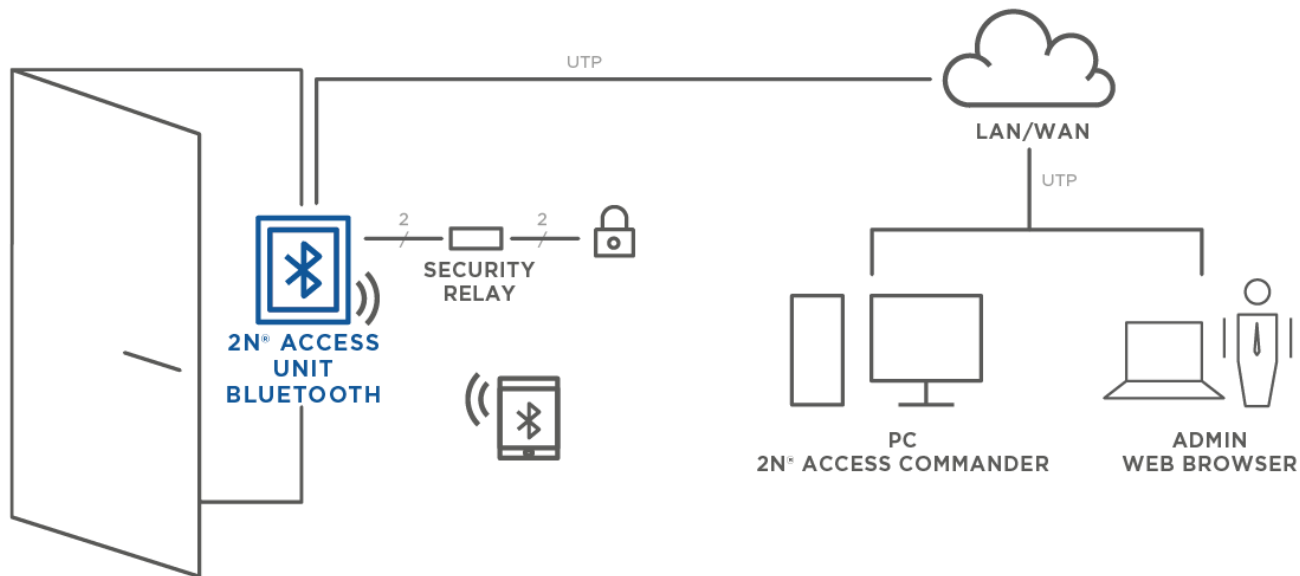
Smartphone is your key

- Have you ever forgotten your RFID card at home? Did you return back for it?

What would you do if you leave your phone at home?

Smartphone is a natural part of our daily life so why not to use it for door control. It also eliminates the risk of card duplication!

CONNECTION TOPOLOGY



COMPATIBLE MODULES



Touch Display

9155036

Keypad module

9155031

RFID Card Reader

9155040

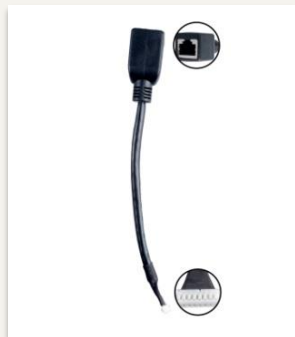
Bluetooth module

9155046

I/O module

9155034

MOUNTING ACCESSORIES



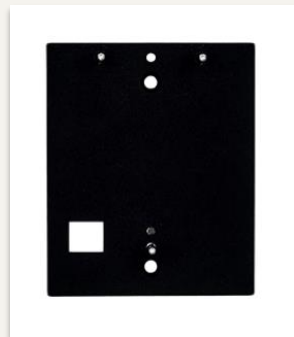
RJ45 pigtail

916020



Surface frame

9155021



Backplate

9155061



Flush mount frame

9155011



Flush mount box

9155014

ADDITIONAL ACCESSORIES



Security Relay
9159010



Strike with contact
932061E



Magnetic door contact
9159012



Request to exit button
9159013

Technical Specifications

Interfaces

- **Power supply:** PoE (802.3af) and/or 12V \pm 15 % / 2A DC
- **Passive switch:** dry and wet contact, up to 30V/1A AC/DC
- **Active output:** up to 12V DC and 500mA
- **Inputs:** passive / active mode (-30V to +30V DC)

Bluetooth

- **Bluetooth 4.0 Compliant** (Bluetooth Smart)
- **Range:** more than 10 meters
- **Mobile App Support:** Android 4.4 or iOS 10 and higher

